

**N-SERIES BACKHOE LOADERS**  
**580SN | 590SN**

**CASE**  
CONSTRUCTION



**STRONGER**  
**EVERYWHERE**

[www.casece.com](http://www.casece.com)  
**EXPERTS FOR THE REAL WORLD**  
**SINCE 1842**

# N-SERIES BACKHOE LOADERS

## POWER WHERE YOU NEED IT MOST – EVERYWHERE!

Put the industry's toughest loader/backhoe to work on your jobsite.

### Proven performance

Long before we launched the new Case N Series loader/backhoes, veteran backhoe operators put our machines to work. And they agree. They're tough machines. Re-engineered from the ground up, the new Case loader/backhoes deliver industry-leading backhoe breakout force, increased loader lift capacity/reach and best-in-class cab visibility.

### Power lift

Our N Series machines out-muscle the competition with as much as 65 percent greater backhoe lift power. With our industry exclusive Power Lift, you'll think twice about hauling an excavator to the job. Plus, Power Lift can be used to break through extreme conditions such as a frost line, dry clay or roots. With the flick of a switch, a 590 SN with Power Lift has up to 40 percent more capacity than the competition to lift, curl, crane and move objects.

### Best-in-class productivity

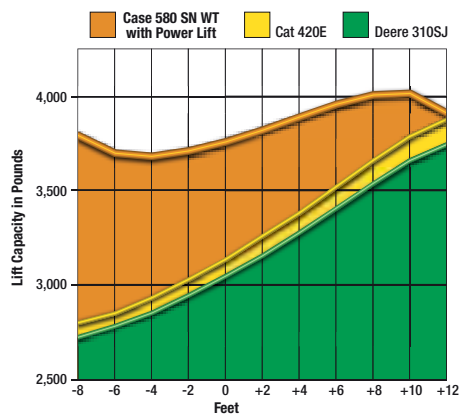
Our new loader arm design will boost your productivity. The loader delivers more breakout force. It has superior reach to dump material into the center of haul trucks with rail extensions. Plus, we reach deeper dig depths than the previous market leader!

### Superior comfort and visibility

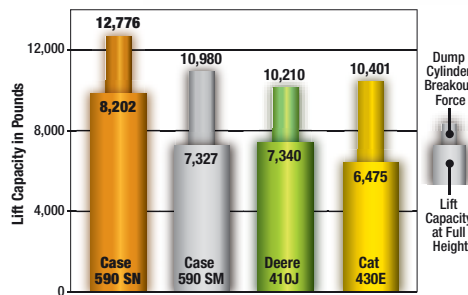
When your operation runs day and night, our new cab keeps your operators productive. Floor-to-ceiling windows provide superior visibility. New rear-quarter windows provide easy communication to the back of the machine and improve cross-ventilation comfort. The high-intensity lighting package improves performance by 28 percent, providing superior visibility and overlapping field coverage. And our 'easy flex' side lights offer 45 degree rotation to deliver extra lighting where it's needed most.



New rear-quarter windows and side lighting



Industry-leading backhoe boom lift



Superior loader lift and breakout force





Optimized hose routing for demolition work

### **Powershift transmission**

The transmission provides a standard kick-down feature and introduces the industry exclusive SmartClutch modulation. The SmartClutch feature lets operators customize the transition from forward to reverse to meet the demands of their specific application.

### **Easy maintenance**

Case is famous for easy ground line daily maintenance. Swing-out

coolers are easy to access. Axles, with outboard-mounted wet disc brakes, are serviceable without complete disassembly. Add a flip-up hood, spin-on filters, grouped site gauges, and you're saving routine maintenance time.

Want more info?

Visit [www.Casece.com](http://www.Casece.com).

Then, see your Case dealer for a demonstration, climb inside and put a new N Series loader/backhoe to work.





## THE CASE DEALER: YOUR PROFESSIONAL PARTNER

Your success starts with world-class Case machinery and attachments.

Your Case dealer will help you work smarter and faster by selecting equipment that delivers performance and operator comfort.

Your dealer has the knowledge and experience necessary to help you choose the right attachments so you can...

- **Work faster and extend equipment life.**
- **Increase machine utilization.**
- **Increase your capabilities.**

Let your Case dealer service your machine on the jobsite.

You'll be back on the job faster.

Advantages include...

- **Responsive job site service to keep your equipment running.**
- **Increase machine uptime.**
- **Certified service staff and improved parts availability.**



## **PARTS**

When you're looking for superior parts options to maximize the performance and lower the operating costs of your Case machinery, turn to CNH Industrial Genuine Parts to keep you equipped for success.

CNH Industrial Genuine Parts fit better, install faster and last longer and in an industry where "high impact" and "heavy lifting" are the norm, the smallest mechanical differences can lead to big problems.

CNH Industrial Genuine Parts from Case are manufactured from superior materials and specifically designed for Case construction equipment to continually and reliably withstand the punishment of everyday construction. So steer clear of mechanical problems and future breakdowns, by choosing CNH Industrial Genuine Parts from Case. They're the only parts that are field-tested and proven to keep your Case equipment performing its best.

## **SERVICE. RELY ON CASE TO DELIVER FOR YOU**

Your commitment to your operation is evident every day, but that doesn't minimize the enormous pressure you face to reduce operating costs and improve productivity. So when you're on the job, make sure you have top-notch service and support of Case behind you every step of the way.

With our factory trained technicians, you can ensure that top-notch service professionals are working on your maintenance needs, so you can focus on your business and the big job challenges ahead, not on the tasks of servicing your equipment.

With your Case Service, you get more than mere oil changes. A Case Service ensures your Case equipment receives a thorough service that meets all requirements of its service schedules and properly maintains it for the day-in, day-out punishment of construction work.

Don't give another thought to time-consuming maintenance tasks. Simply rest easy and make certain that your service needs are taken care of by a Case factory trained technician.



When the unexpected occurs, you need to know your equipment is protected.  
At Case Construction we understand the importance of your machinery being in good working order when it counts.

ProCover is designed to help keep your equipment working well beyond the manufacturer's base warranty period while taking away the concerns of the cost and inconvenience of mechanical failure.

## WHAT ARE THE ADVANTAGES OF PROCOVER?

### PEACE OF MIND

Provides protection beyond the Manufacturer's Base Warranty Period.

### FLEXIBLE OPTIONS

Plans can be customised to meet individual needs.

### DEPENDABLE SERVICE

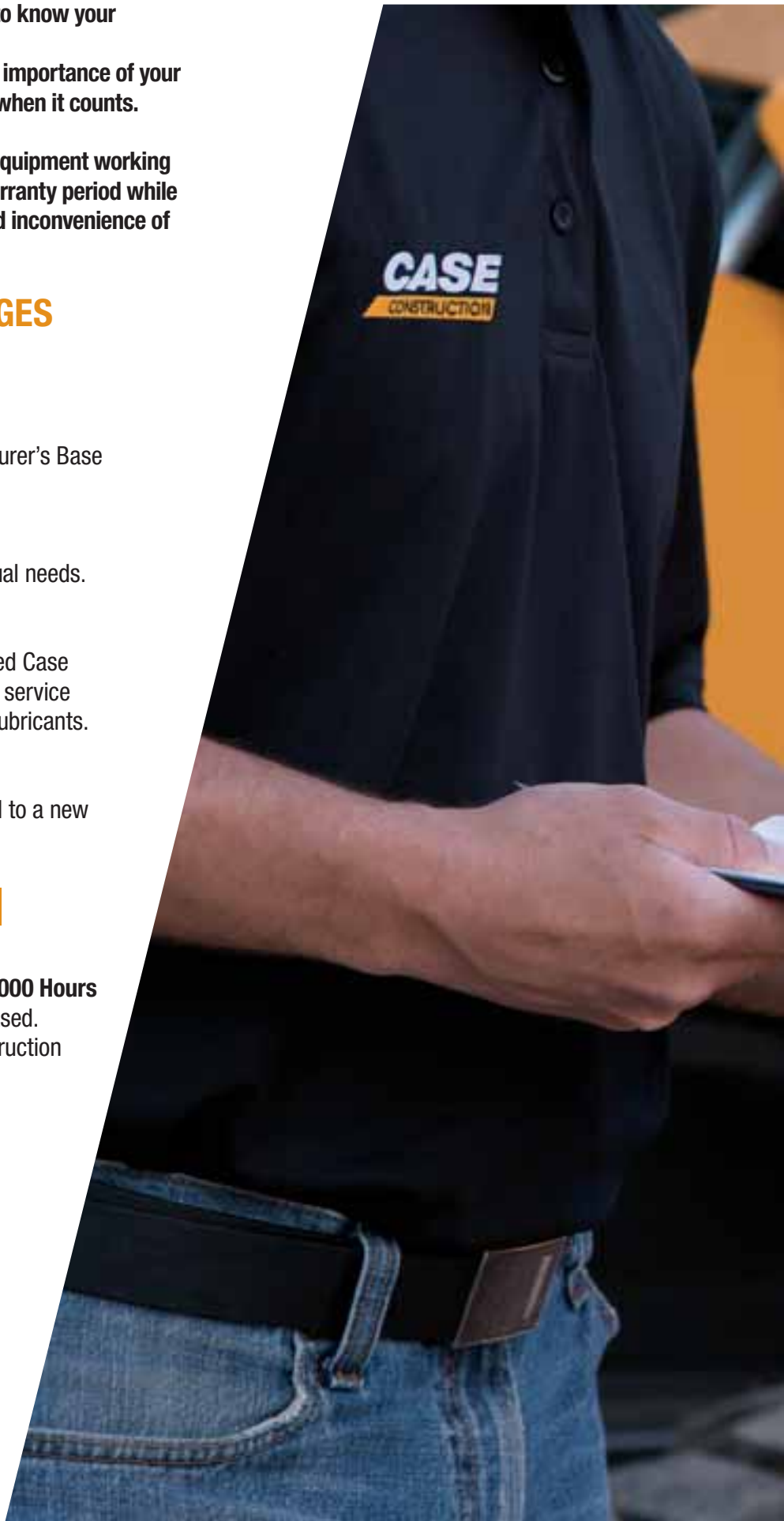
Eligible repairs completed by an authorised Case Construction Dealership and their trained service technician's using genuine OEM parts & lubricants.

### TRANSFERABLE PROTECTION

New Equipment Plans may be transferred to a new owner at no charge

## COVERAGE

- **STANDARD PROTECTION PLAN**     **3 Years / 3000 Hours**  
Additional years/hours can be purchased.  
Please contact your local Case Construction dealer for further information.



# STANDARD PROCOVER PLUS PROTECTION PLAN

## CONSTRUCTION EQUIPMENT MASTER PARTS SCHEDULE

This plan provides coverage for the components listed below when a failure occurs due to a defect in material or workmanship, and may provide coverage for additional components not listed when the damage is caused by or resulting from a covered failure of a listed component.

### PREMIER COMPONENTS COVERED

ENGINE AND ALL INTERNAL LUBRICATED COMPONENTS WITHIN	TRANSMISSIONS/AXLES/HYDROSTATICS	ELECTRICAL	HYDRAULICS
Accessory Gears	Axle Housing	Alternator	Accumulator And Related Relief Valve
Air Intake Hose	Axle Shaft	Gauges	Brake Accumulator
Camshaft	Clutch Discs (Wet Only)	Horn	Brake Pressure Sensor
Camshaft Bearings	Clutch Plates (Wet Only)	Indicators	Brake Pump, Brake Valve
Camshaft Drive Gear	Control Rods	Instruments	Differential Lock Valve
Catalytic Converter	Counter Shaft Clutch	Electronic Joysticks	Fan Pumps And Motors
Charge Air Cooler	Differential Housing	Electric Motors	Hydraulic Cylinders
Cold Start Enrichment Systems	Differential Pinion Gear / Ring Gear	Factory Installed Telematics	Hydraulic Hoses and Piping
Connecting Rods & Bearings	Drive Axle Hub	Sensors	Hydraulic Motors
Crankshaft Bearings & Gear	Drive Shaft Support Bearing	Solenoid Valves	Hydraulic Oil Coolers
Crankshaft Including Front And Rear Crankshaft Seals	Drive Shaft with Universal Joints	Starter And Starter Solenoid	Hydraulic Pumps
Cylinder Heads/ Head Gaskets	Electronic Transmission Controller and Valve	Switches	Hydraulic Reservoir
Cylinder Liners	Enclosed Oil Immersed Chains and Sprockets	Traction Control System	Hydraulic Valves
Diesel Exhaust Fluid Tank and Dispensing System	External Oil Lines	Voltage Regulator	Internal O-Rings and Bonded Washers
Diesel Particulate Filter	Filler Tubes (Transmission)	Wiring Harnesses	Pilot Control
EGR System Manifold	Final Drive Pinion	Wiring Harnesses Exclusions	Pressure Reducing Valves
Electronic Engine Control Module	Final Drive Planetary Gears	Rubbing, Chafing, Loose Or Corroded Connections	Unloading Valves
Engine Block	Front Wheel Drive Sensors	<b>FACTORY INSTALLED HEAT AND AIR CONDITIONING</b>	<b>STRUCTURAL</b>
Engine Mounts And Supports	Hydraulic Drive / Travel Motor	Accumulator	Backhoe Booms
Engine Oil Cooler	Hydraulic Drive Pump	Clutch	Backhoe/Excavator Dipper Sticks
Engine Speed Controls, Linkages, and Cables	Hydraulic Transmission-Control Valve	Compressor	C Frame
Exhaust Manifold and Muffler	Hydrostatic Motor	Condenser	Car Body
Fan And Fan Drive	Hydrostatic Transmission Charge Pump	Dryer	Chassis
Filter Mount	Hydrostatic Transmission Pump	Evaporator	Circle Frame
Flywheel, Ring Gear	Hydrostatic/Hydraulic Pump Drives	Expansion Valve	Engine Frame
Front And Rear Engine Covers And Seals	Internal Lubricated Clutch Housings	Heater Core	Equipment Frame
Front Damper	Internal Transmission Control Linkage	Hoses	Excavator Booms
Fuel Lines	Internal Wet Service Brakes	Pulley	Falling Object Protection Structure (FOPS)
Fuel Tank	MFWD Axle/Differential Assembly including Driveshaft and U Joint	Seals & Gaskets	Forklift Masts
Fuel Transfer Pump & Gasket	Planetary Gear Carrier	Temperature Control Programmers and Valves	Inner and Outer Dipper Arms of the Extendable Boom (Backhoe Loader)
Injection Pump	Pneumatic Valves	<b>OPERATOR AREA</b>	Main Frame
Injectors	Rotary Hydraulic Manifold	Covers and Panels	Rollover Protection Structure (ROPS)
Intake and Exhaust Manifold And Gaskets	Splitter Drive/Drop Box	Exterior/Interior Door/Panel Latches, Hinges & Struts	Swing Frame
Oil Filler Tube	Steering Clutches (Wet)	Exterior/Interior Moldings	Swing Tower Castings (Backhoe Loader)
Oil Lines	Swing Motor And Swing Gear Box	Knobs for Switches and Handles	Track Frame
Oil Pan And Gasket	Torque Converter	Mirrors	Wheel Loader/Skid steer Loader Arms
Oil Pump	Torque Converter Pump	Seat Frame & Suspension	
Pistons & Rings	Transfer Drive		
Pre-Cleaner/Air Cleaner Housing	Transmission Case		
Pressure/Temperature Sensors & Sending Units	Transmission Gears, Bearings, & Shafts		
Pulleys	Transmission Pump		
Radiator	Travel & Swing Sections (only) Of Main Control Valve		
Rocker Arm Assembly	Travel Control Valve		
Selective Catalytic Reduction System	Turntable Bearing		
Thermostats	Undercarriage Roller And Idler Seals And Bearings		
Timing Gears	Undercarriage Tensioners		
Turbocharger And Gasket	UNDERCARRIAGE EXCLUSIONS: Sprocket, Tracks, Pads, Bolts, Chains, Or Any Failure Due To Wear, Or Breakage Caused By Wear		
Valve Cover And Gasket			
Water Piping			
Water Pumps			

# SPECIFICATIONS

	580 SUPER N	590 SUPER N
<b>ENGINE</b>		
	Case 445TA/E3	
Net hp (kW) @ rpm	95 hp (71 kW) @ 2200 rpm	108 hp (81 kW) @ 2200 rpm
Net max. torque @ 1400 rpm	328 lb.ft (445 N.m) 333 lb.ft (452 N.m) w/viscous fan	380 lb.ft (515 N.m)
Dig Depth Classification	14 to 15 ft.	15 to 16 ft.
Standard Transmission	PowerShuttle/PowerShift	PowerShuttle/PowerShift
<b>BACKHOE BREAKOUT</b>		
Bucket	14,223 lbf**	15,652 lbf**
Dipper	9,069 lbf**	9,478 lbf**
<b>LOADER BREAKOUT</b>		
Bucket	9,807 lbf	11,104 lbf
Dipper	10,947 lbf	12,776 lbf
Power Lift Option	Available	Available
Lift capacity to full height <sup>1</sup>	6,703 lb (3040 kg)	7,807 lb (3541 kg)
Bucket cutting edge width <sup>1</sup>	82 in (2.08 m)	93 in (2.36 m)
Departure angle - 2WD/4WD	15.3° / 19°	NA / 18.4°
Operating Weight*	17,226 lb (7,814 kg)	20,458 lb (9280 kg)

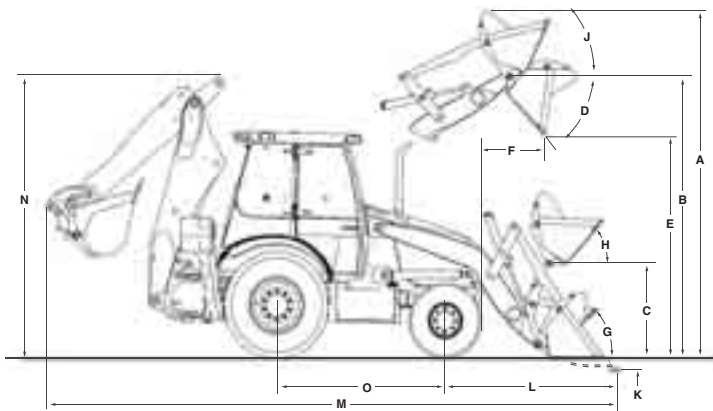
\* Operating weight may vary depending on machine configuration.

\*\* Equipped with Power Lift Option.

<sup>1</sup> With 4 IN 1 bucket.

## LOADER DIMENSIONS

580 SN – 4WD, 4 IN 1<sup>®</sup> bucket with 19.5 L x 24.0 rear tires



<b>A</b> Overall operating height - Fully raised	13 ft 8 in (4.16 m)
<b>B</b> Height to bucket hinge pin - Fully raised	11 ft 3 in (3.42 m)
<b>C</b> Height to bucket hinge pin - SAE carry	13.6 in (345 mm)
<b>D</b> Dump angle @ full height	47°
<b>E</b> Dump clearance @ full height, 45° dump	
- Bucket	8 ft 11 in (2.71 m)
- Clam open	9 ft 8 in (2.96 m)
<b>F</b> Dump reach @ full height, 45° dump (from bumper)	
- Bucket	29.1 in (738 mm)
- Clam open	15.3 in (388 mm)
<b>G</b> Bucket rollback @ groundline	42°
<b>H</b> Bucket rollback @ SAE carry	42°
<b>J</b> Bucket rollback @ full height	Adjustable
<b>K</b> Digging depth below grade	
- Bucket flat	4.8 in (122 mm)
- Clam open (dozing)	4.1 in (103 mm)
<b>L</b> Reach from front axle centerline - Bucket on ground	6 ft 7 in (2.04 m)
<b>M</b> Overall transport length	23 ft 1 in (7.04 m)
<b>N</b> Height - Transport	11 ft 1 in (3.37 m)

### CASE CONSTRUCTION EQUIPMENT CONTACT INFORMATION AUSTRALIA

31-53 Kurrajong Road  
St. Marys nsw 2760

**CASE** Customer Assistance  
1300 99 CASE

**NOTE:** CASE provides specific outfits for various countries and many optional fittings (OPT). The illustrations on this or other leaflets may relate to standard or optional fittings. Please consult your CASE dealer for any information in this regard and any possible updating on components. CNH Industrial reserves the right to modify machine specifications without incurring any obligation relating to such changes.